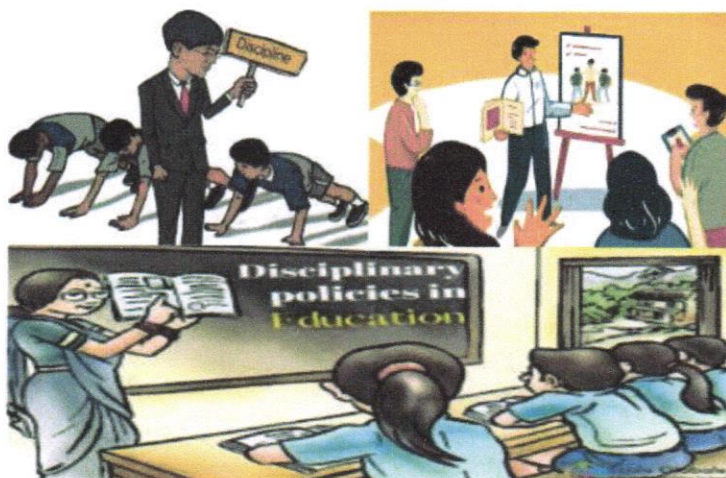




Gokhale Education Society's
Sir Dr. M. S. Gosavi College of
Pharmaceutical Education and Research,

Prin. T. A. Kulkarni Vidyanagar, College Road,

Nashik-422005, MS, INDIA



DISCIPLINE POLICIES



Discipline Policy


The students' adherence to discipline is necessary for the College to run well. When Rules of Discipline are correctly followed, the College is better able to assist the students. Students who break these guidelines are denied access to the benefits of various College facilities. Some of the most significant discipline regulations are listed below. Parents and guardians are asked to instruct their student to follow the following rules for behaviour:

- The best discipline is self-discipline. To ensure the efficient operation of the college, all students are expected to abide by the rules and regulations already in place.
- It is against the law for students to engage in any behaviour inside or outside of the institution that would compromise its smooth operation or damage its reputation. The college should not be exposed to any political or other outside influences, either directly or indirectly.

Rules for attendance

- Students must maintain a minimum of 80% attendance in their respective semesters in order to receive their terms. According to the SPPU course structure, attendance guidelines are established and followed. Attendance rules are framed and followed as per SPPU course structure.
- If a student needs to miss class for a valid cause, such as a medical emergency, they must obtain written permission from the class teacher in advance.
- Students must provide written notice of major concerns requiring more than three days of absence, which must be approved by the principal and submitted to the class instructor, who subsequently relays the information to the other subject in charge of the class.




Principal
S. S. Education Society's
S. S. Gosavi College of
Pharmaceutical Education & Research
Prin. T. A. Kulkarni Vidyanagar,
Nashik - 422 005.